

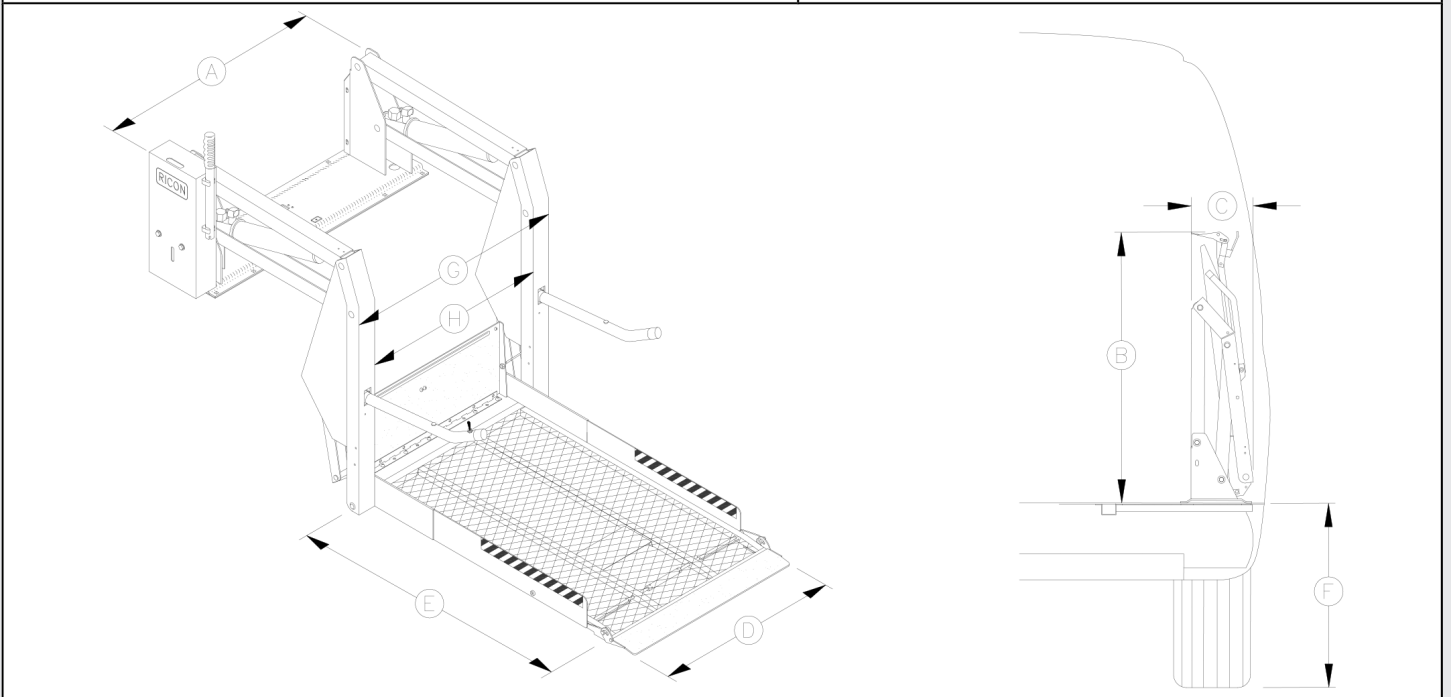


# Ricon Wheelchair Lifts™



## Reliant™

Power .....	electro-hydraulic	Rated load capacity .....	800 lbs*
Motor rating @ 12 volts DC.....	65.0 amp. avg/cycle, 1250 psi	Manual backup (up) .....	hand pump
Hydraulic cylinders .....	2 ea, 1.5", power-up/gravity-down	Manual backup (down).....	pressure release valve
		Lift weight.....	310 - 325 lbs



### Specifications (inches)

	A	B	C	D	E	F	G	H
<b>MODEL</b>	Stationary frame width	Height (folded)	Installation depth (folded)	Usable platform width	Usable platform length	Floor-to-ground travel	Traveling frame width	Clear entry width
S1101	47	40.6	14	30	38	27	37.5	31
S1200	47	46.5	14	30	44	31	37.5	31
S1203	47	53.6	14	30	51	31	37.5	31
S1204	49	46.5	14	32	44	31	39.5	33
S1205	49	53.6	14	32	51	31	39.5	33
S1207	47	50.6	14	30	48	31	37.5	31
S1208	49	50.6	14	32	48	31	39.5	33

\* Lift is rated at 800 lbs on Dodge Promaster and Ford Transit when installed with vehicle specific install kits.